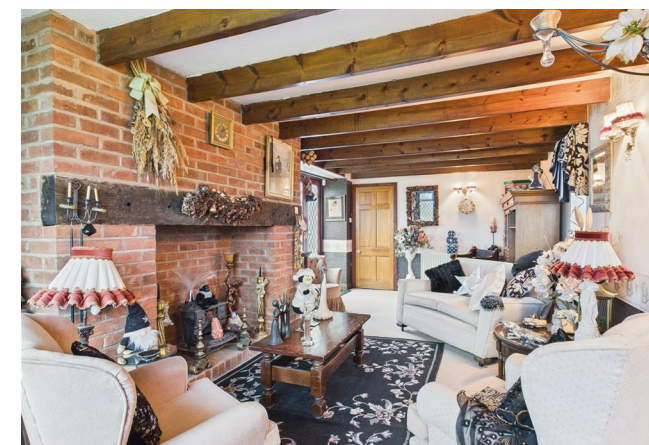
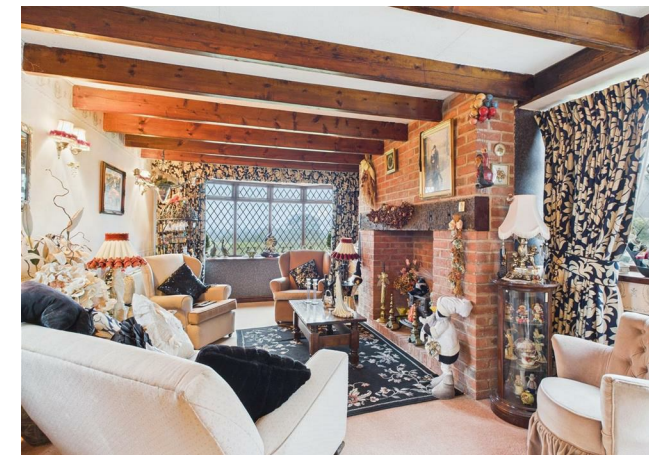
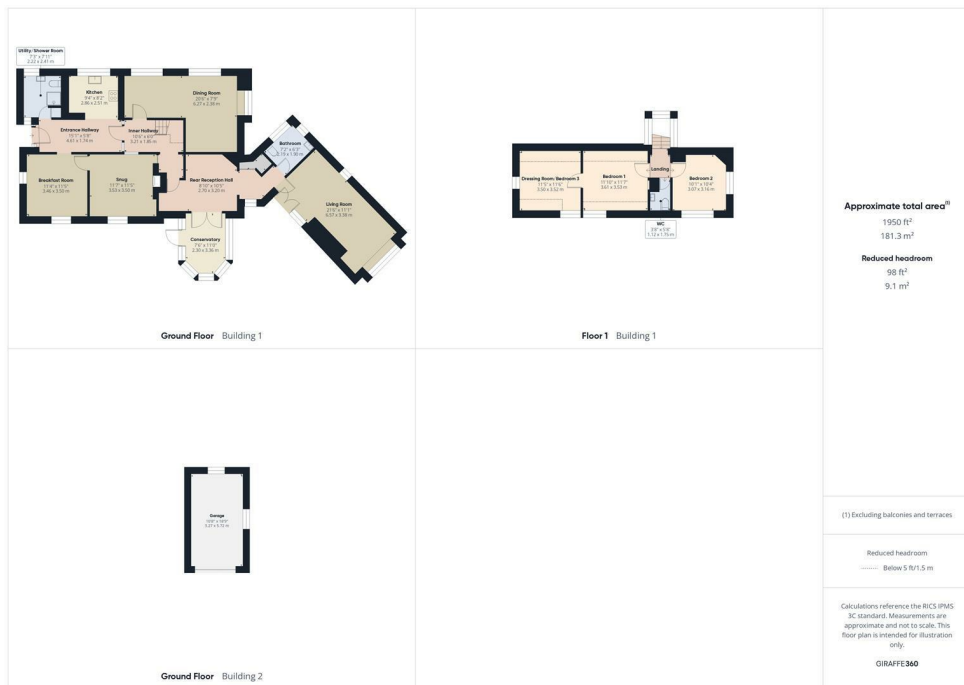




EDEN MIDCALF
— SALES & LETTINGS —

£550,000
Tenbury Road
Kidderminster, DY14 9HJ



Energy Efficiency Rating		
	Current	Potential
Very energy efficient - lower running costs		
(92 plus) A		
(81-91) B		
(69-80) C		
(55-68) D		
(39-54) E		
(21-38) F		
(1-20) G		
Not energy efficient - higher running costs		
England & Wales	EU Directive 2002/91/EC	

Agents Note: Whilst every care has been taken to prepare these particulars, they are for guidance purposes only. All measurements are approximate and are for general guidance purposes only and whilst every care has been taken to ensure their accuracy, they should not be relied upon and potential buyers/tenants are advised to recheck

EDEN MIDCALF
 SALES & LETTINGS

5 Load Street
 Bewdley
 DY12 2AF

01299 402392
 wyreforest@edenmidcalf.co.uk
<https://www.edenmidcalf.co.uk/>
 us/